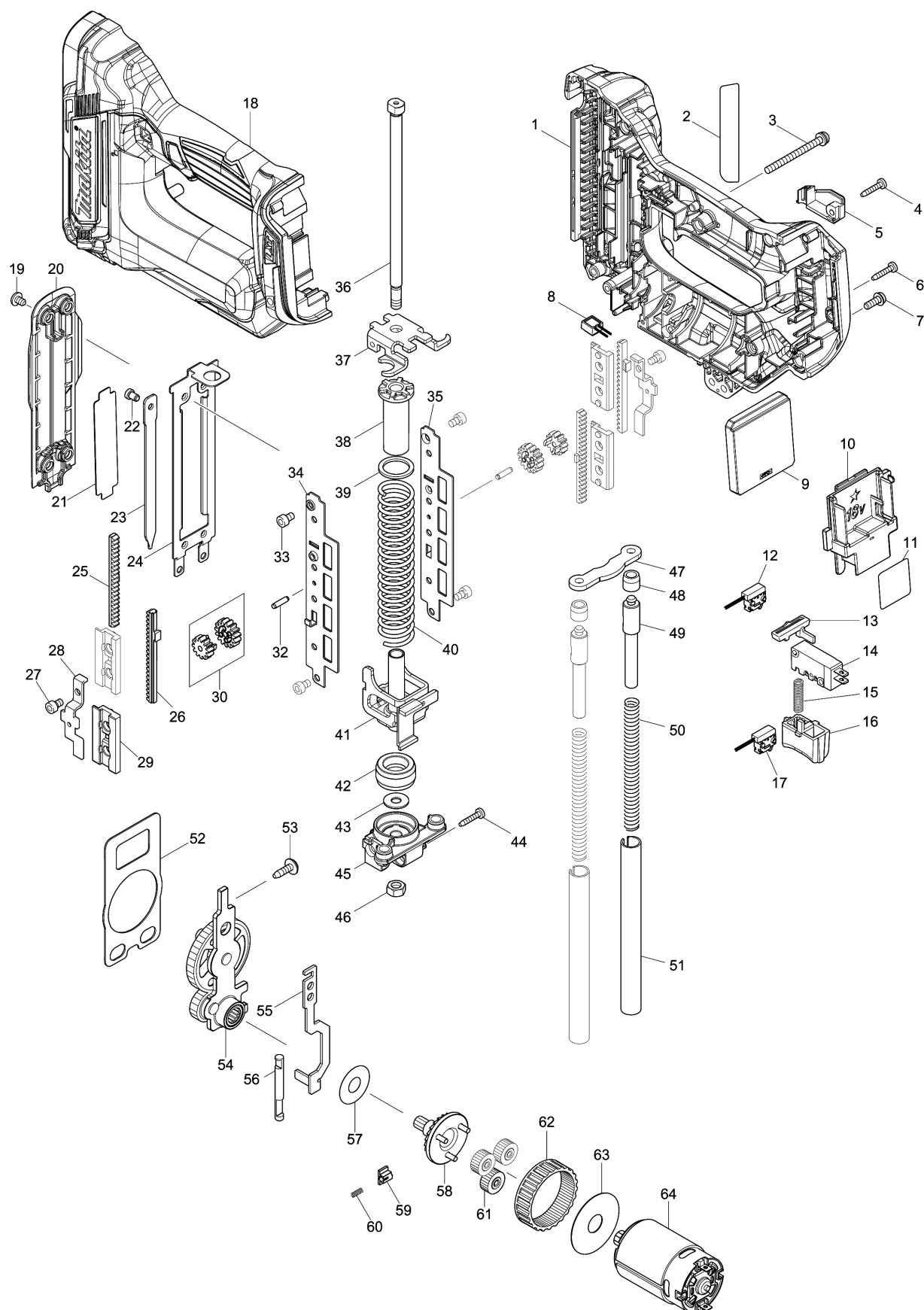


# Model No.DFN350 35MM CORDLESS BRAD NAILER



This exploded view diagram illustrates the assembly of a mechanical component, likely a door handle or latch. The diagram shows the following parts and their assembly sequence:

- 65, 66, 69, 68:** Screws and pins used for initial mounting.
- 67:** A long, thin metal plate or bracket.
- 70, 72, 73:** Latch mechanism components, including a bolt and a housing.
- 71:** A small pin or screw.
- 90:** A long, thin metal rod or shaft.
- 74, 75, 76, 77, 79:** A series of components including a handle, a knob, and a spring mechanism.
- 80, 81, 82:** A small handle component with a pin and a screw.
- 83, 84, 85, 87:** A small handle component with a pin and a screw.
- 86:** A long, thin metal rod or shaft.
- 88:** A small screw.
- 89:** A long, thin metal rod or shaft.
- 91:** A long, thin metal rod or shaft.
- 92, 93, 94, 95:** A small handle component with a pin and a screw.
- 96:** A small screw.